



MICROBIOLOGIA E PARASITOLOGIA IMAGENS DE DIAGNÓSTICO LABORATORIAL

MODULO 4 CIÊNCIAS BIOLÓGICAS I



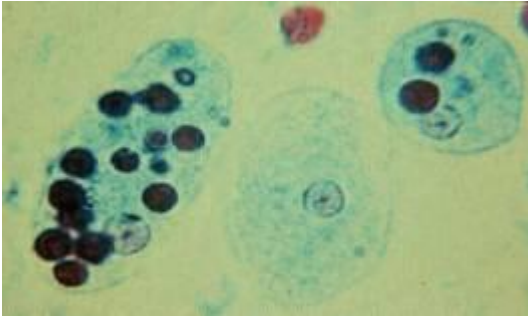
RESUMO

PROTOZOÁRIOS INTESTINAIS

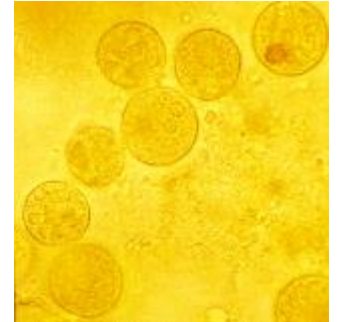


Amebas

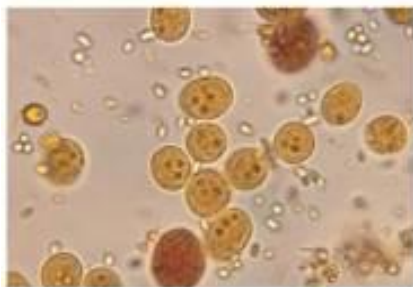
Entamoeba histolytica /dispar



Entamoeba coli



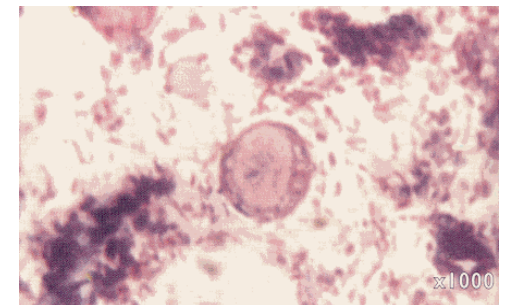
Endolimax nana



Iodamoeba bütschlii



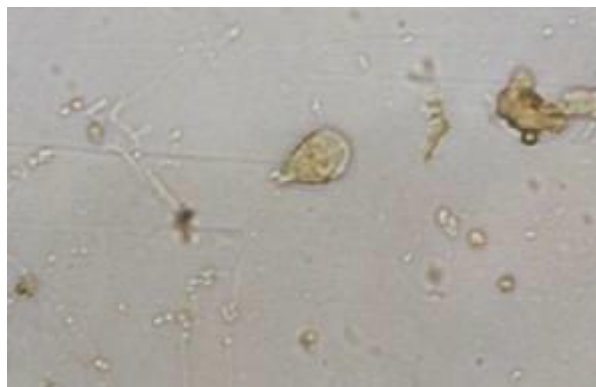
Blastocystis hominis





Flagelados

Giardia lamblia



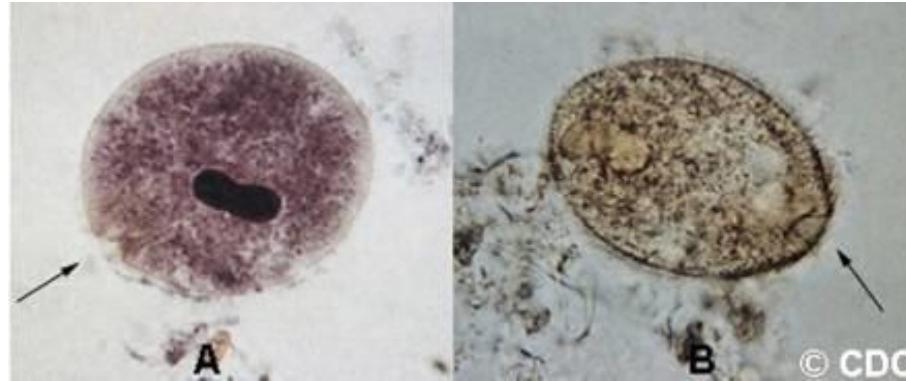
Chilomastix mesnili





Ciliados

Balantidium coli

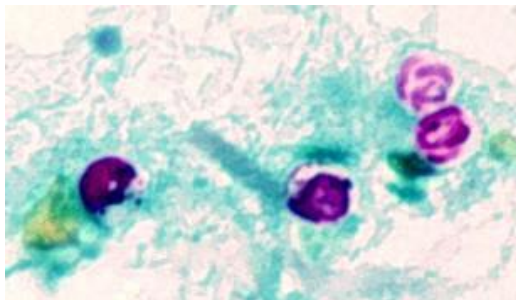


Cisto

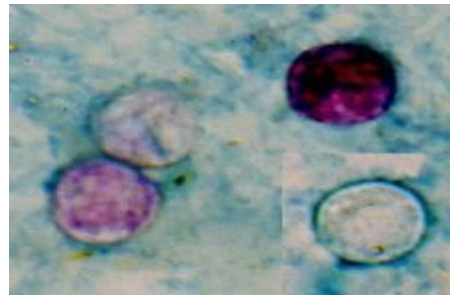
Protozoário

Coccídios

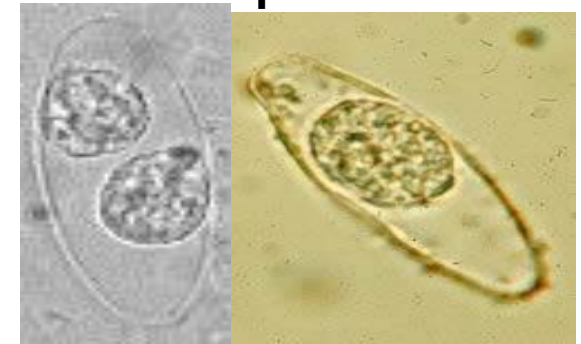
Cryptosporidium sp.



Cyclospora cayetenensis



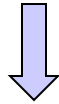
Isospora belli





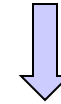
ESTÁGIOS DE DIAGNÓSTICO

Protozoários



**CISTOS
TROFOZOÍTOS
OOCISTOS
ESPOROS**

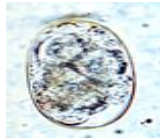
Helmintos



**VERMES ADULTOS
LARVAS
OVOS**



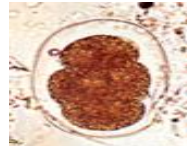
HELMINTOS INTESTINAIS



Ovo de Ancilostomatídeo



Ovo larvado de Ancilostomatídeo



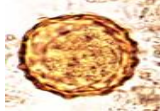
Ovo de Ancilostomatídeo



Ovo de *Enterobius vermicularis*



Ovos de *Enterobius vermicularis*



Ovo de *Ascaris* (fertilizado)



Ovo de *Ascaris* (fertilizado)



Ovo de *Ascaris* (larvado e decorticado)



Ovo de *Ascaris* (infértil)



Ovo de *Ascaris* (infértil)



Ovo de *Schistosoma mansoni*



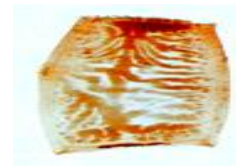
Ovo de *Fasciola hepatica*



Ovos de *Taenia*



Ovo de *Taenia*



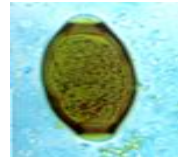
Proglote grávido *Taenia solium*



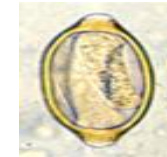
Ovo de *Hymenolepis diminuta*



Ovo de *Hymenolepis nana*



Ovo de *Trichuris trichiura*



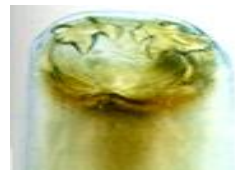
Ovo larvado de *Trichuris trichiura*



Proglote grávido *Taenia saginata*



Cápsula bucal *Ancilostoma duodenale*



Cápsula bucal *Ancilostoma duodenale*



Cápsula bucal *Necator americanus*



Cápsula bucal *Necator americanus*

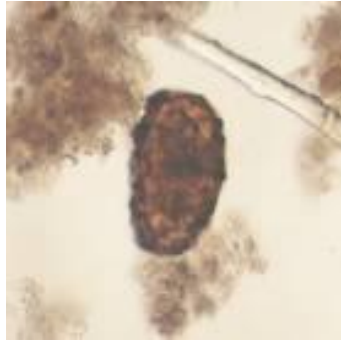
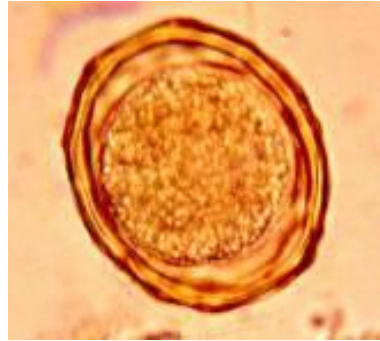


Bolsa copuladora de *A. duodenale*



Nematelmintos

Ascaris lumbricoides



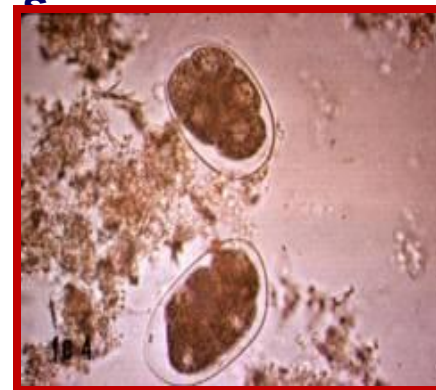
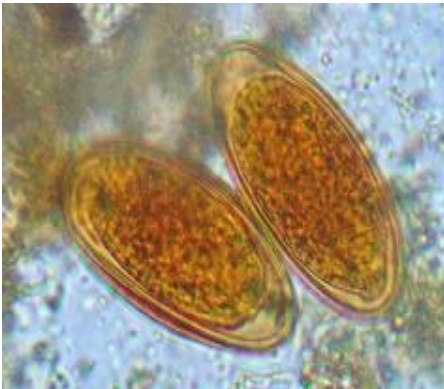
Tricuris trichiura



Enterobius vermicularis

Ancilostomideo

S.stercoralis





Cestódeos

Taenia solium



Taenia saginata



Hymenolepis nana



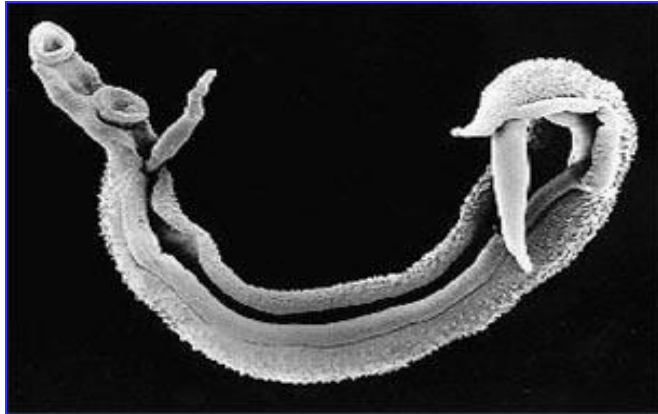
Hymenolepis diminuta





Trematódeos

Schistosoma mansoni



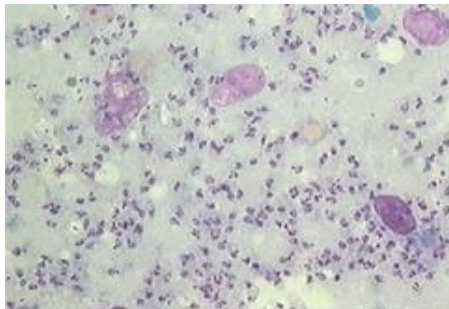
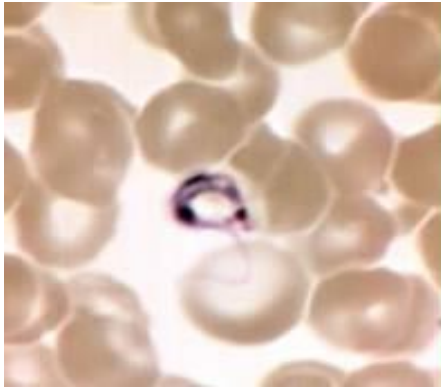
Schistosoma haematobium



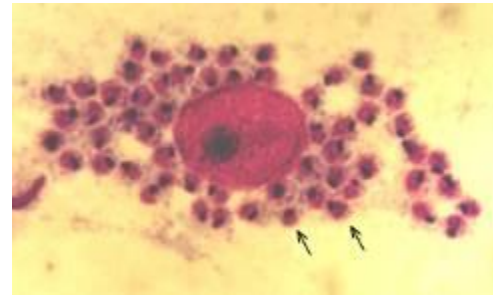


PARASITOS DO SANGUE E DOS TECIDOS

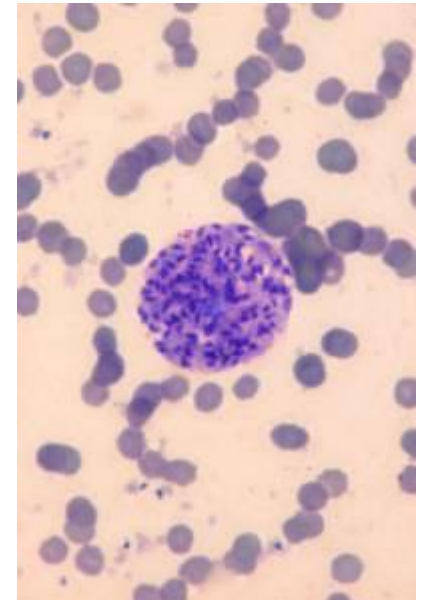
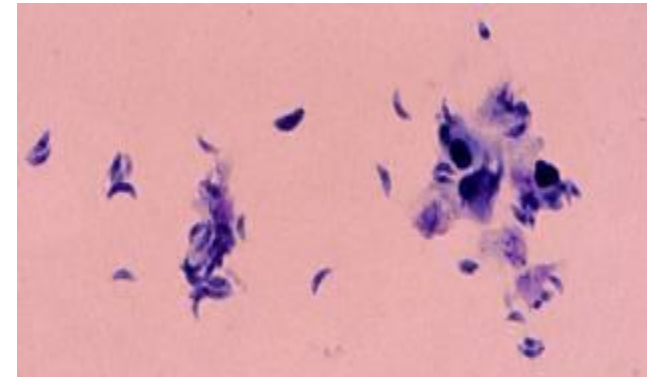
DOENÇA DE CHAGAS



LEISHMANIOSE

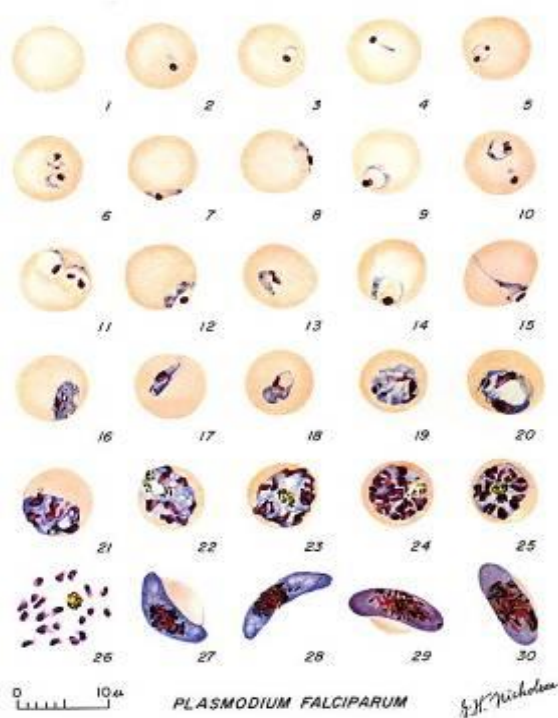


TOXOPLASMOSE

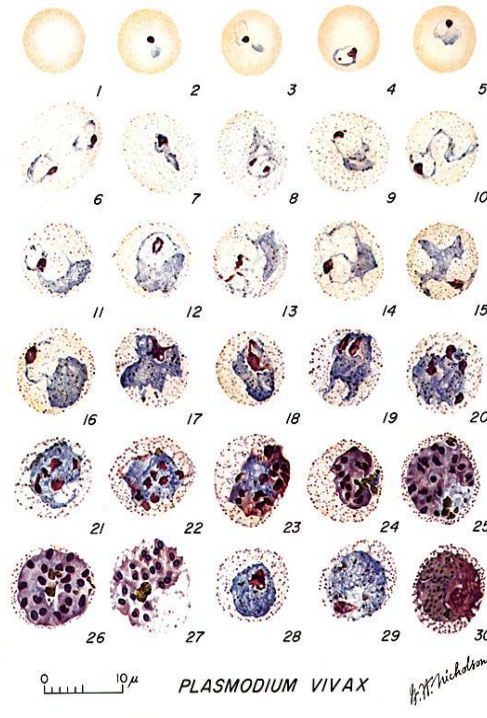




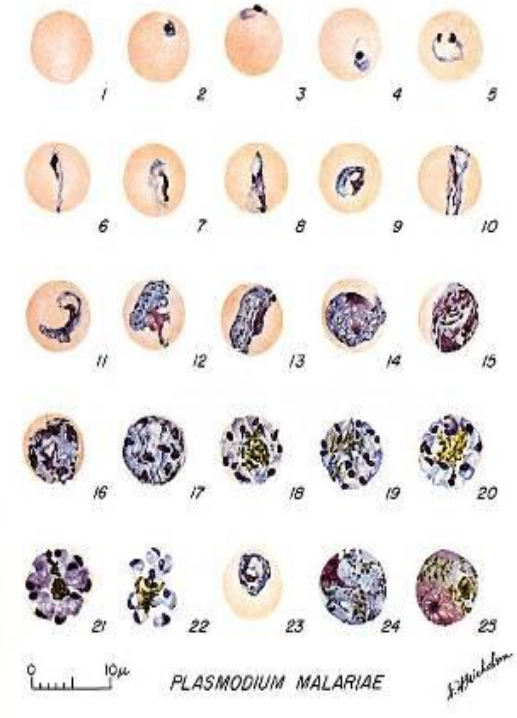
PLASMÓDIOS DA MALÁRIA



- 1: hemácias normais
- 2-18: trophozoítos
- 2-10: trophozoítos em anel
- 19-26: esquizontes
- 27,28: macrogametas maduros
- 29,30: microgametas maduros



- 1: hemácias normais
- 2-6: trophozoítos jovens
- 7-18: trophozoítos
- 19-27: esquizontes
- 28,29: macrogametas maduros
- 30: microgametas maduros



- 1: hemácias normais
- 2-5: trophozoítos jovens
- 6-13: trophozoítos
- 14-22: esquizontes
- 23: gametas em desenvolvimento
- 24: macrogametas
- 25: microgametas